



# 41965 MOTIVO

Dimensions shown as Width x Depth x Height. Specifications are correct at time of printing and are subject to change without notice.  
LHF - left hand facing RHF - right hand facing IA - inside arm to inside



10 Armless Chair  
26 x 41 x 41"  
66 x 104 x 104cm



2P Armless Wide Recliner Pwr  
34 x 41 x 41"  
86 x 104 x 104cm



56 RHF Chaise  
57 LHF Chaise  
39 x 64 x 41"  
99 x 163 x 104cm



60 Power Armless Recliner  
26 x 41 x 41"  
66 x 104 x 104cm



66 RHF Power Recliner  
67 LHF Power Recliner  
32 x 41 x 41"  
81 x 104 x 104cm



6P RHF Wide Recliner Power  
7P LHF Wide Recliner Power  
39 x 41 x 41"  
99 x 104 x 104cm



70 Armless Chair  
34 x 41 x 41"  
86 x 104 x 104cm



B0 Home Theater Wedge, USB  
19 x 36 x 24"  
48 x 91 x 61cm



B2 Console, USB  
12 x 36 x 24"  
30 x 91 x 61cm



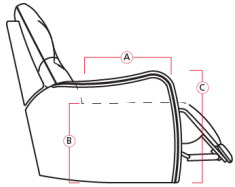
B4 Home Theater Wedge, Wd Tbl, USB  
19 x 36 x 24"  
48 x 91 x 61cm



B6 Console, Wood Table, USB  
12 x 36 x 24"  
30 x 91 x 61cm



B9 Corner Table w/ Sound Bar  
38 x 38 x 28"  
97 x 97 x 71cm



## Dimensions

- A - Seat Depth - 22.5" / NaNcm
- B - Seat Height - 18.5" / NaNcm
- C - Arm Height - 23.5" / NaNcm

## Features

- Hardwood, softwood and engineered wood products; all joints pinned & glued for uniformity & strength
- Back: Premium elastic webbing offers consistent suspension for the life of the product
- Seat: Interwoven 100% elastic webbing offers consistent suspension for the life of the product
- Chaise styling for ultimate comfort and support in full recline

## Options

- Stainless Steel Cupholder
- Antique Cupholder
- LED cupholder
- Grommet only option available

**Battery packs are not recommended for use with LED/USB options.**



# 41965 MOTIVO

## Popular Configurations

Note: Always assemble configurations from right hand facing to left hand facing components.

### How We Measure

**Height** - measured from the highest point of the back pillow to the floor.

**Depth** - measured from the front edge of the seat cushion to the top of the back.

**Width** - measured from the widest point of the arm or arm pillow to the widest point of the opposite arm or arm pillow.

**Arm Height** - measured from the top of the arm to the floor.

**Seat Height** - measured from the crown of the seat cushion to the floor.

### Warranty

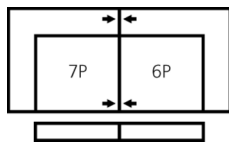
**Wood Frames, Springs or Webbing** - ten year warranty

**Metal Frames** - two year warranty under normal household use

**Motion Reclining Mechanisms** - seven year warranty

**Reclining Chairs, Sofabed Mechanisms and Sofabed Mattresses** - two year warranty

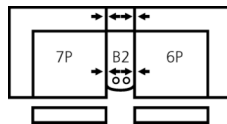
**Seat Cushion Foam and Fibre-filled Components** - five year pro-rated warranty



**2-Seat Reclining Sectional**

79 x 63"

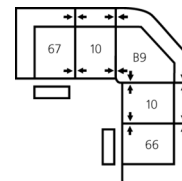
201 x 160cm



**2-Seat Console Separated Reclining Sectional**

91 x 63"

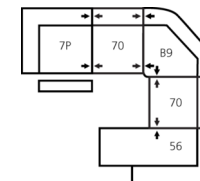
231 x 160cm



**3-Seat Corner Reclining Sectional with Table**

104 x 104"

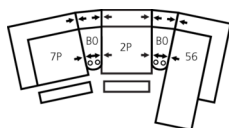
264 x 264cm



**3-Seat Corner Reclining Sectional with Table and Chaise**

115 x 120"

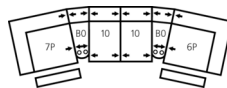
292 x 305cm



**3-Seat Angled Wedge Reclining Sectional**

147 x 76"

373 x 193cm



**3-Seat Angled Wedge Reclining Sectional**

165 x 69"

419 x 175cm